

LBS Cricket Club

KIT ORDERS

Short-Sleeve Jersey Design



HIGH PERFORMANCE CLOTHING

Masuri's short sleeved cricket playing shirt brings high level apparel to players of all levels. The performance fit of this shirt ensures players look stylish, while the technical material of this garment provides ventilation and comfort.

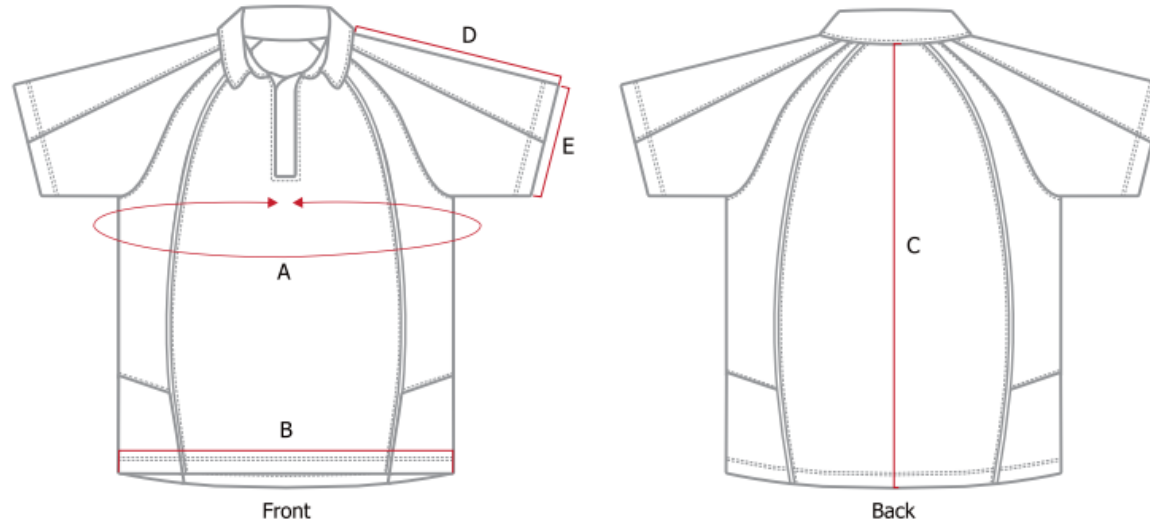
The breathable fabric of our cricket playing shirt conducts heat and sweat away from the body to keep players cool during play. Wearers can also enjoy the soft yet durable fabric which can endure the rigours of the sport while providing maximum comfort.

PRODUCT FEATURES

- Moisture management system
- Strong, Lightweight Material
- Performance Fit

Price: 31 GBP

Short-Sleeve Jersey Size



Garment Specification (Inches)

Measurement Position	XS	S	M	L	XL	2XL	3XL	4XL
A. CHEST CIRCUMFERENCE	37 ½	39 ¼	41 ¼	43 ¼	45 ¼	47 ¼	51 ¼	55
B. HALF HEM	18 ¾	19 ¾	20 ¾	21 ¾	22 ¾	23 ½	25 ½	27 ½
C. CENTRE BACK	27 ¾	28 ½	29 ¼	30	31	31 ¾	32 ¾	33 ¾
D. SLEEVE LENGTH	12 ¼	12 ¾	13 ½	14	14 ½	15 ¼	16 ¼	17 ¼
E. HALF SLEEVE OPENING	6	6 ¼	6 ¾	7	7 ½	7 ¾	8 ½	9

Full-Sleeve Jersey Design



HIGH PERFORMANCE CLOTHING

Masuri's long sleeved cricket playing shirt brings high level apparel to players of all levels. The performance fit of this shirt ensures players look stylish, while the technical material of this garment provides ventilation and comfort.

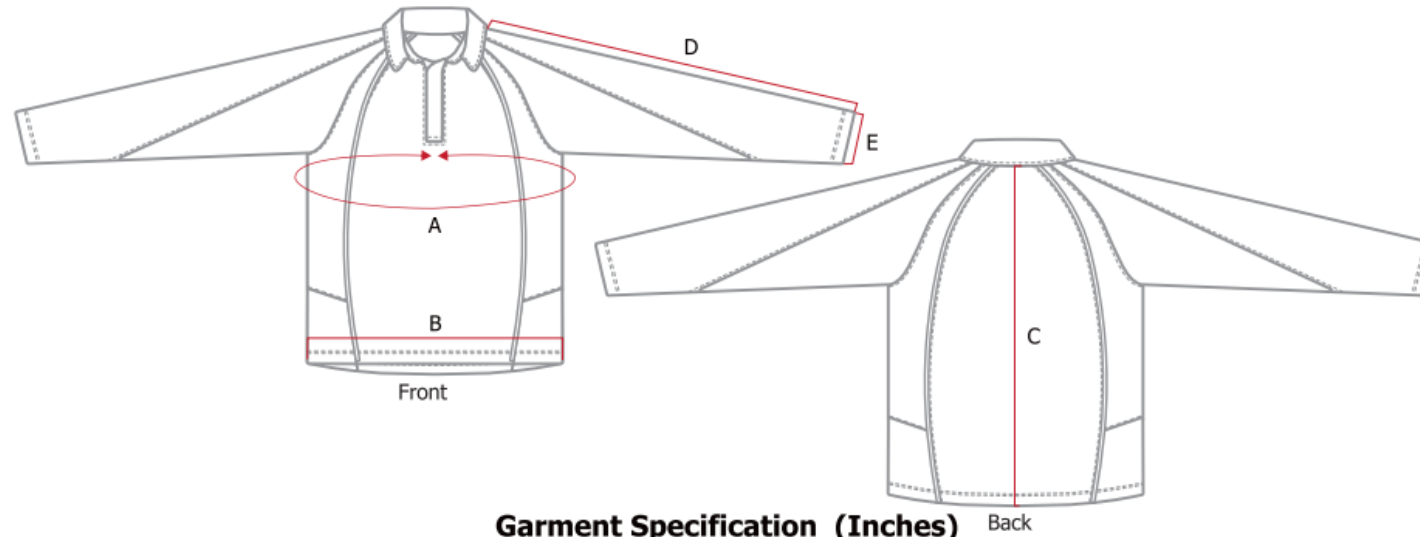
The breathable fabric of our cricket playing shirt conducts heat and sweat away from the body to keep players cool during play. Wearers can also enjoy the soft yet durable fabric which can endure the rigours of the sport while providing maximum comfort.

PRODUCT FEATURES

- Moisture management system
- Strong, Lightweight Material
- Performance Fit

Price: 35 GBP

Full-Sleeve Jersey Size



Garment Specification (Inches)

Measurement Position	XS	S	M	L	XL	2XL	3XL	4XL
A. CHEST CIRCUMFERENCE	37 ½	39 ¼	41 ¼	43 ¼	45 ¼	47 ¼	51 ¼	55
B. HALF HEM	18 ¾	19 ¾	20 ¾	21 ¾	22 ¾	23 ½	25 ½	27 ½
C. CENTRE BACK	27 ¾	28 ½	29 ¼	30	31	31 ¾	32 ¾	33 ¾
D. SLEEVE LENGTH	30	30 ¾	31 ¼	32	32 ½	33	34	35
E. HALF SLEEVE OPENING	4 ¼	4 ¼	4 ½	4 ½	4 ¾	4 ¾	5	5

Trousers Design



LIGHTWEIGHT, DURABLE, COMFORTABLE

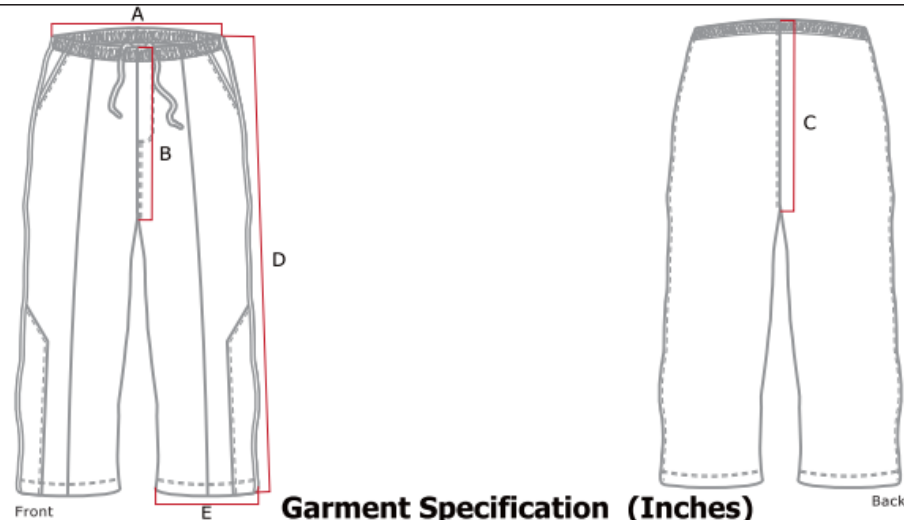
Masuri's cricket trousers are built with durability and comfort in mind. Our trousers are designed to withstand even the most rigorous of fielding sessions. The lightweight micromesh construction provides freedom of movement to allow players to focus on their performance.

PRODUCT FEATURES

- Moisture management system
- Elasticated waist for optimum fit
- Lightweight & Durable

Price: 26 GBP

Trousers Size



Garment Specification (Inches)

Measurement Position	XS	S	M	L	XL	2XL	3XL	4XL
TO FIT WAIST CIRCUMFERENCE	27 ¼	29 ¼	31	33	35	37	39	41
A. WAIST RELAXED HALF	12	13	14	15	16	17	18	19
B. FRONT RISE	11	11 ½	11 ¾	12 ¼	12 ½	13	13 ½	13 ¾
C. BACK RISE	15	15 ¼	15 ¾	16 ¼	16 ½	17	17 ¼	17 ¾
D. SIDE SEAM	39	39 ¾	40 ½	41 ¼	42 ¼	43	43 ¾	44 ½
E. LEG OPENING	7 ½	7 ¾	8 ¼	8 ¾	9	9 ½	9 ¾	10 ¼